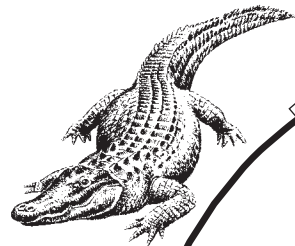
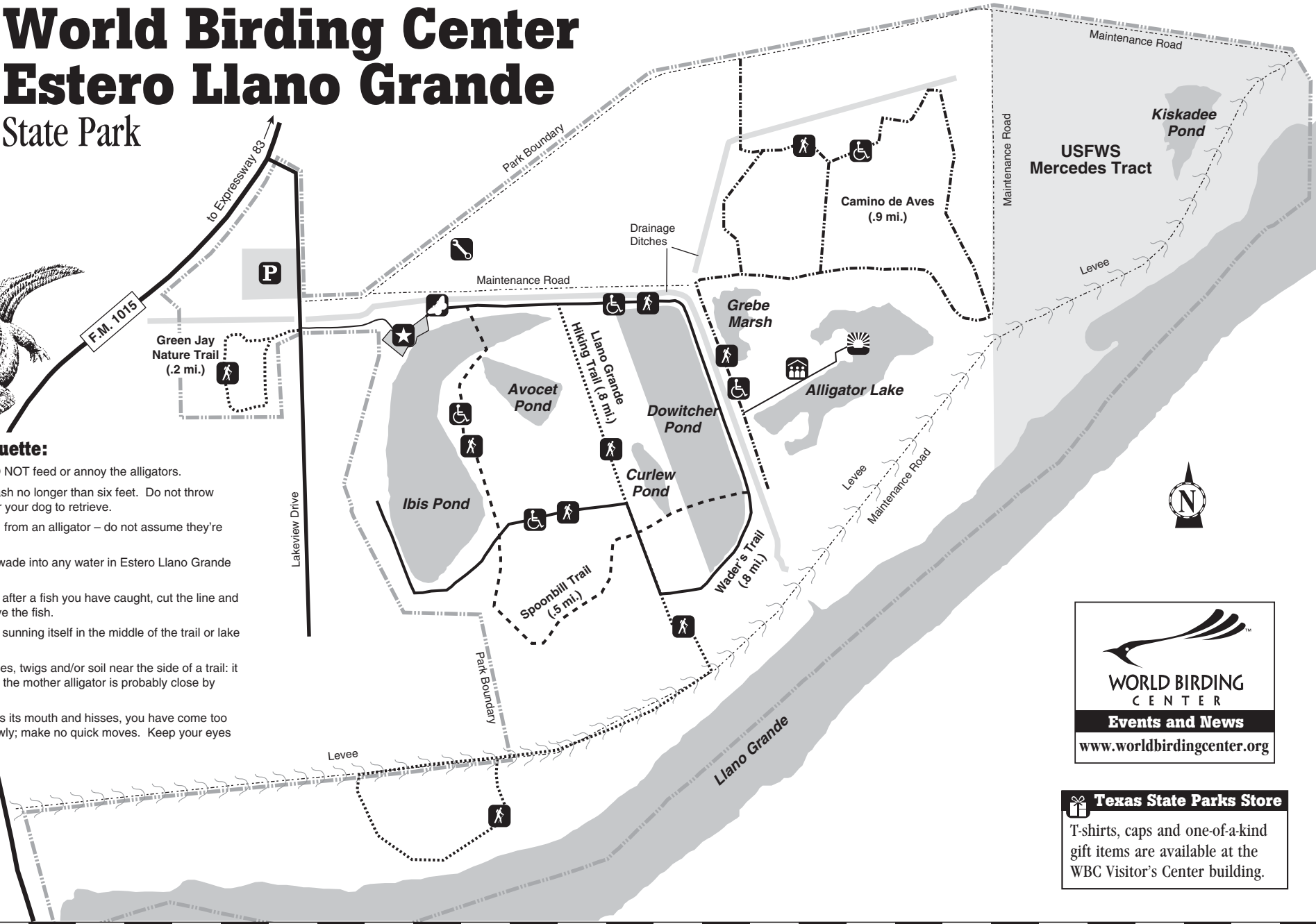


# World Birding Center Estero Llano Grande State Park



### Alligator Etiquette:


- ABSOLUTELY DO NOT feed or annoy the alligators.
- Keep pets on a leash no longer than six feet. Do not throw objects in water for your dog to retrieve.
- Keep at least 30 ft. from an alligator – do not assume they're slow-moving.
- Do not swim in or wade into any water in Estero Llano Grande State Park.
- If an alligator goes after a fish you have caught, cut the line and let the alligator have the fish.
- Avoid any alligator sunning itself in the middle of the trail or lake bank.
- Stay clear of grasses, twigs and/or soil near the side of a trail: it may be a nest and the mother alligator is probably close by guarding it.
- If an alligator opens its mouth and hisses, you have come too close. Retreat slowly; make no quick moves. Keep your eyes on the alligator.



### Legend:

- ★ WBC Visitor's Center
- Texas State Parks Store
- Viewing Deck
- Classroom
- Rest Rooms
- P Parking
- ♿ Wheelchair Accessible Trails
  - Camino de Aves
  - Spoonbill Trail
  - Wader's Trail
  - Observation Deck
- 🚶 Hiking Trails
- 🏠 Open Air Pavillion
- 🦋 Butterfly Garden
- ☀️ Observation Deck
- 🔧 Maintenance Area

  
**WORLD BIRDING CENTER**  
**Events and News**  
[www.worldbirdingcenter.org](http://www.worldbirdingcenter.org)

 **Texas State Parks Store**  
 T-shirts, caps and one-of-a-kind gift items are available at the WBC Visitor's Center building.

3301 S. International Blvd. (F.M. 1015)  
Weslaco, TX 78596  
(956) 565-3919